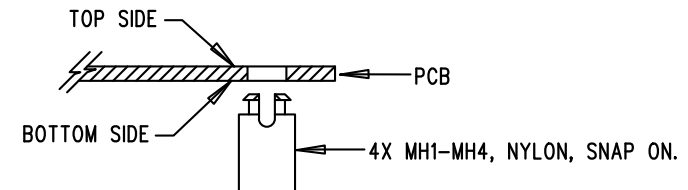
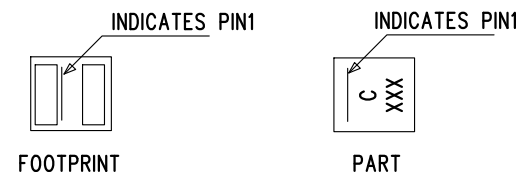


NOTES: UNLESS OTHERWISE SPECIFIED

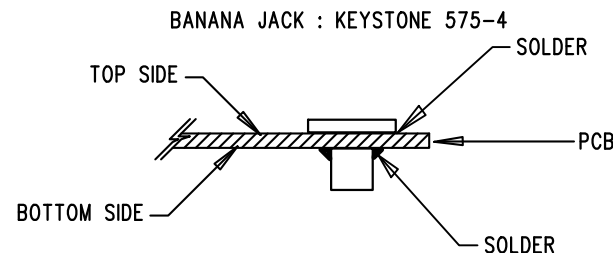
1. WORKMANSHIP SHALL BE IN ACCORDANCE WITH IPC-A-610.
2. ASSEMBLY PROCESS SHALL INCLUDE: REFLOW SOLDER TOP SIDE SMD. MAXIMUM SOLDER TEMPERATURE IS 240 DEGREES CELSIUS.
3. PARTS TO OMIT WILL BE SPECIFIED ON THE BILL OF MATERIALS. LOCATIONS OF OMITTED PARTS SHALL BE FREE OF SOLDER. MASK THE SOLDER STENCIL WHERE SMT PARTS ARE OMITTED.
4. INSTALL SHUNTS AS SHOWN ON ASSY DRAWING.
5. DEPANELIZE BOARDS AFTER ASSEMBLY AND ROUTE-OUT THE BREAKOUT TABS ON FOUR SIDES OF THE BOARD EDGE.
6. DO NOT APPLY ANY KIND OF ASSEMBLY STAMP OR QA STAMP TO ANY BOARD.
7. INSTALL 4 STANDOFFS AS SHOWN BELOW:



8. INSTALL INDUCTOR L1 AS SHOWN BELOW:



9. INSTALL BANANA JACKS AS SHOWN BELOW:



ANALOG DEVICES www.analog.com		
TITLE: TOP ASSEMBLY DRAWING 18V, 8A MONOLITHIC SYNCHRONOUS STEP-DOWN SILENT SWITCHER 3 WITH LOW NOISE REFERENCE		
SIZE N/A	IC NO. LT8625SPJV-1 DC3220A	REV. 1
		SHT 1 OF 1